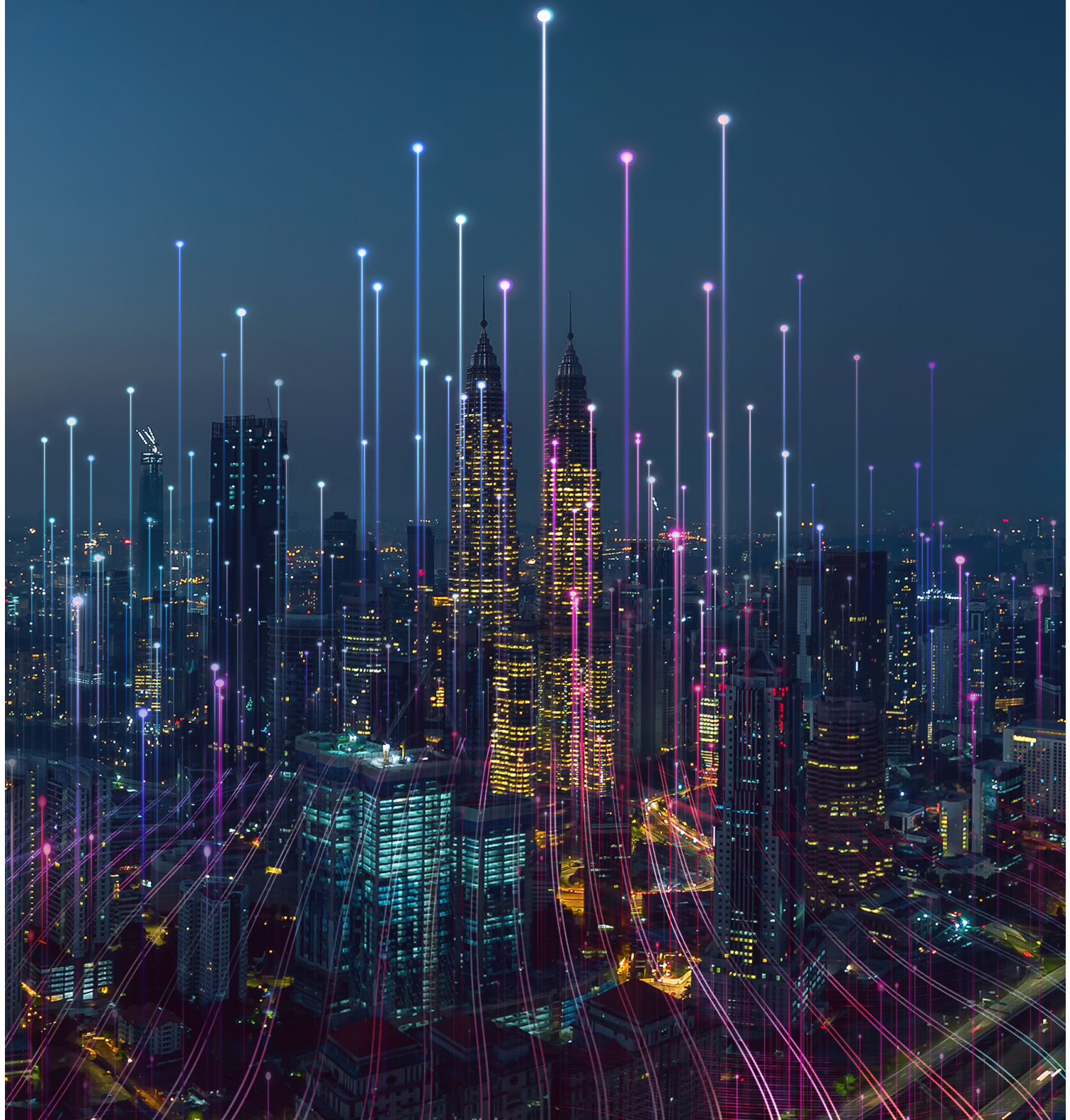




Openings Studio™



Security and safety at just a touch

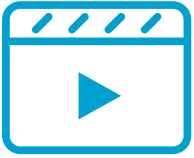
ASSA ABLOY

Facts and information about implementing ASSA ABLOY's
award-winning BIM solution - Openings Studio™

Experience a safer
and more open world

Our commitment to data protection

Security and safety at just a touch



Watch this video to learn how we are safe, secure, and protected.

<https://bit.ly/OSdataprotect>

Openings Studio™ is a cloud-based platform used in design, specification, construction and facilities to manage door, frame and hardware information quickly, accurately and securely.

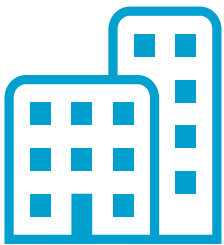
We understand that the safety and encryption of your company's information is fundamental to evolving efficiencies and workflows.

As your partner in "openings made easy," we'd like to share how we protect project information and personal data, at every level.

Using our Autodesk® Revit® or GRAPHISOFT® ARCHICAD® add-in to analyze a project is a secure process. Openings Studio™ searches for parameters related to openings within a given BIM file. The data is then transmitted to the Openings Studio™ cloud-based platform and stored for specification purposes.

All transmitted information is encrypted using Transport Layer Security (TLS) and stored with Azure Disk Encryption for Windows virtual machines. Azure Disk Encryption uses the BitLocker external key protector to provide volume encryption for the OS and data disks of Azure virtual machines (VMs), and is integrated with Azure Key Vault to help you control and manage the disk encryption keys and secrets.





Project data and information integrity

Who has access to the project information?

You decide when to share your project information.

During the project analyze process, a copy of the Autodesk® Revit® or GRAPHISOFT® ARCHICAD® project file is not transmitted or stored. The parameter data accessed is related to floors and wall construction and hosted door families. Only the project information, views and schedules that have been selected by you will be transferred.

Quite simply, it is like taking a snapshot of the pieces needed to create the project specification documents. You are only connected to Openings Studio™ for the duration that you are logged into the application.

Access to the project information is determined through authorized users. This allows project administrators to define levels of access managed through a series of permissions. Personal information our customers share, such as names and email addresses, are used to authenticate their identity when logging into and using Openings Studio™.

Data Transfer Protocol

The TCP/IP ports used between the service and any client or system operates via HTTPS 443. All project information transmissions are encrypted using TLS 1.2 (transport layer security) and HTTPS is our protocol for transfer of data during each session. This is similar to a process that you would go through

when logging into a bank or similar website.

How is information secured?

We employ a multi-tenant environment with logical data separation via an authentication layer.

Where is information stored?

All information is stored on Microsoft Azure Cloud Storage, who has more than 90 compliance certifications, including over 50 specific to global regions and countries. Retained information collected during the analysis process is used solely in the preparation of door and hardware specification documents

How often do you provide updates?

We release major enhancements and updates to the platform on a quarterly basis.



Access control



Who has access to this data?

Information collected is accessible, by permission only, to individuals or entities working with Openings Studio™ in the specification, estimating, and bid or tender processes specific to the project analyzed.

How are passwords protected?

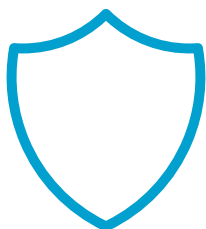
Passwords are hashed, using a one-way secure hash algorithm to store passwords.

How is our information used?

Information and data collected by ASSA ABLOY in conjunction with usage of the software is not shared, transmitted, or sold for data-mining or third party marketing purposes. The Openings Studio™ software application is intended for use within the building design, engineering, and construction industry by licensed architects, engineers, contractors, product suppliers, and facility owners.



Disaster recovery and backups



Do you have procedures in place to destroy data?

We are able to ensure retention and destruction of data meets business and regulatory requirements.

Do you have a disaster recovery site or provider?

Recovery protocols are in place in the event of a disaster or failure, including utilizing a warm site for disaster recovery failover.

How do you monitor performance of services?

Azure Monitoring provides continuous monitoring of the health of services.

How are Non-Disclosure Agreements (NDA) covered?

We work together with many levels of organizations that require a NDA and have varying degrees of safeguards in place to protect project information and users. With the NDA option we are able to restrict access to a project ensuring only authorized users who are under a signed agreement are able to view and work on the project. A warning will alert if someone

attempts to add a new user. The NDA protocol can apply across the firm, or at the project level-level, or at the project-level.

How often do you perform security audits?

We perform penetration testing on an annual basis, or as deemed appropriate if significant changes are made to the application which may affect security. Carbon Black is employed to check network and host-based intrusion detection or prevention.

How often do you back-up information?

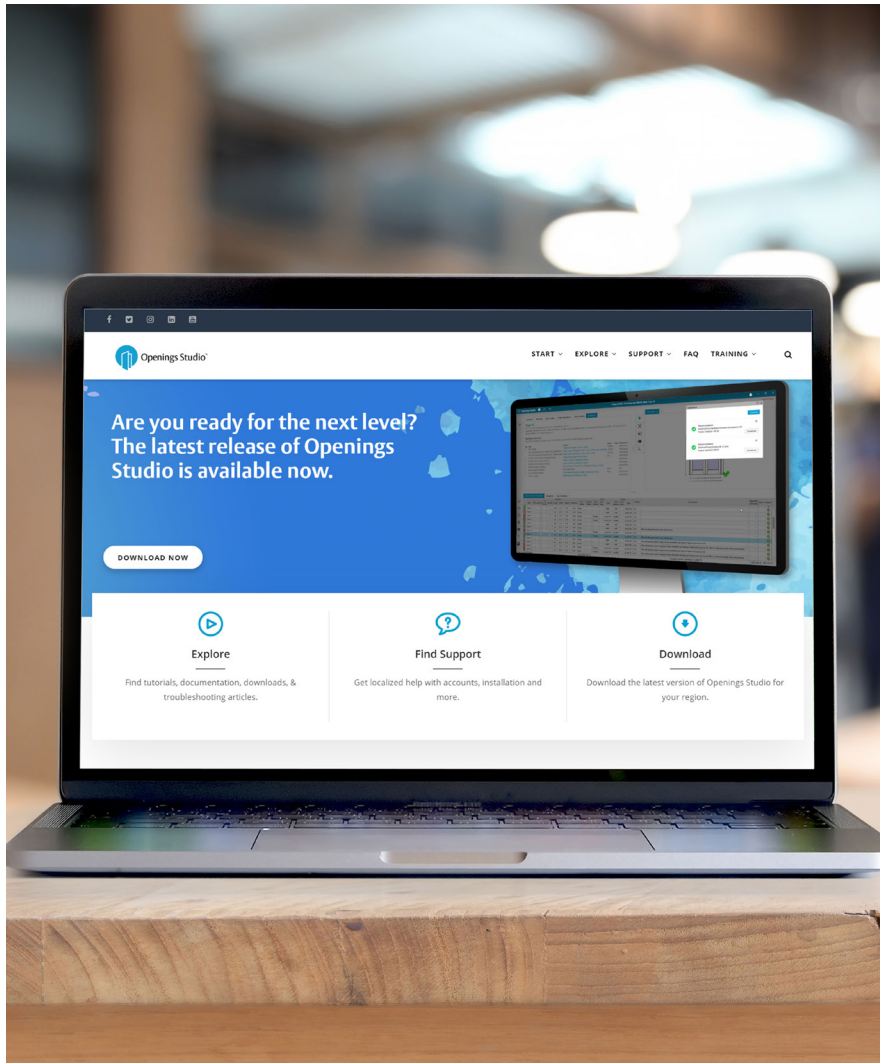
Full backups are performed daily and database transaction logs are backed up every 15 minutes.

What are the bandwidth requirements for connections?

We require a minimum of 100 Kbps up, and down, although recommend three (3) Mbps up/down. An average database transaction can require up to five (5) seconds.



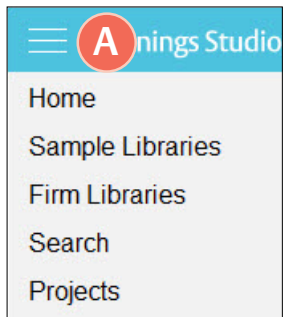
For further information, please see the [Openings Studio™ End-User License Agreement](#) and the [Information Retention documentation](#).



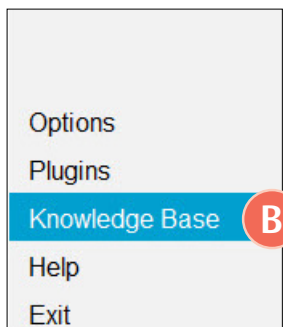
Learn more through online resources

Looking for more resources about Openings Studio™? Look no further. Walk through the [analyze](#) or [export](#) process with just a couple of clicks. Easily search the Knowledge Base for frequently asked questions, tutorials, and videos.

For more in-depth training, make sure to talk to your local Openings Studio consultant!



Click on the Hamburger Menu (A) at the top of Openings Studio™.



Click on Knowledge Base (B).



Stay current with the latest features

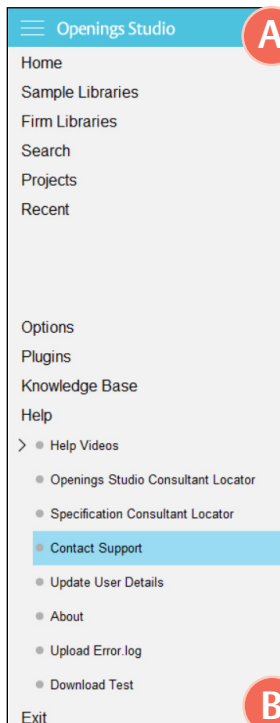
The current Release Notes are always available in the Knowledge Base on the Specifier, Consultant and Architect home pages.

For past release notes, visit the Release Archive. Click on Openings Studio™ Release Archive at the bottom of the current Release Notes.

Have questions related to the Knowledge Base?
Email knowledge@openingsstudio.com.

Our team is ready to help you get more out of Openings Studio™

Contacting your local support team is as easy as 1, 2, 3. Use the guide below to contact the appropriate regional support team member.



A Click on the Hamburger Menu at the top of Openings Studio™ (A).

B Under Help, click on Contact Support (B).

C An email will pop-up from your email client, pre-addressed to the appropriate support team. Add your support request and hit send (C).

D You will also receive a verification email that a service ticket was created (D).

The ASSA ABLOY group is the global leader in access solutions. Every day we help people feel safe, secure and experience a more open world.

ASSA ABLOY

For more information, visit www.openingsstudio.com

Copyright © 2020, ASSA ABLOY. All rights reserved. Reproduction in whole or in part without the express written permission of ASSA ABLOY is prohibited.