

3.13 Release Notes

ASSA ABLOY



Openings Studio™

Experience a safer
and more open world



Security compliance focus for enhancements, development

Another year is just about in the books. As we race towards the 2021 finish line, we wrap up the year with this lucky 3.13 release.

The majority of this release is dedicated to background development activities related to proactive security improvements of Openings Studio. Software security works a little bit like a door ... nobody notices it when it's working correctly ... and that's the way to we want to keep it!

In addition to this work, we made some other nice updates and user experience improvements. These include a new plugin for Archicad 25, updates to the PDF pins, new 3D building view options, tweaks to the Edit Attachments screen, and more.

Don't forget to check out our ever growing [Knowledge Base](#) for more information about this release. Please contact your local BIM Manager or Openings Studio Consultant with questions.

Cheers to the New Year!



Erin Fay
Openings Studio Product Owner

Table of Contents

- 02 | Password changes
- 02 | Archicad® 25 plugin
- 03 | Analyzing archived projects
- 03 | 3D building view options
- 03 | Loading screens
- 04 | PDF pins and filters
- 04 | Entrance Systems specification editor notes
- 05 | Editing project attachments
- 06 | Mobile app updates
- 07 | Find answers fast with the Knowledge Base
- 08 | Get help with Openings Studio Global Support
- 09 | Take your marketing to the next level



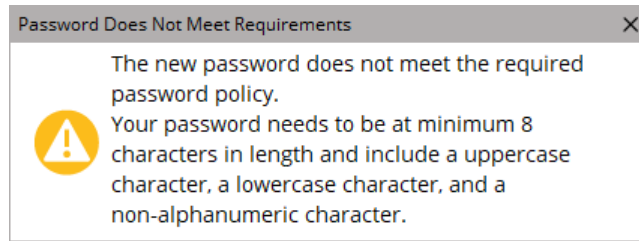
Password Changes

The most user-facing security changes we made are for passwords.

New password requirements have been implemented for new users, or existing users who want or need to update their passwords.

The password policy now requires that new passwords be a minimum of eight characters long and include a mix of at least one uppercase character, one lowercase character, and one non-alphanumeric character.

In addition to the password strength requirements, if you forget your password, you will now receive a link in your email to create a temporary password. The first time you log in with this temporary password, Openings Studio will prompt you to change it.

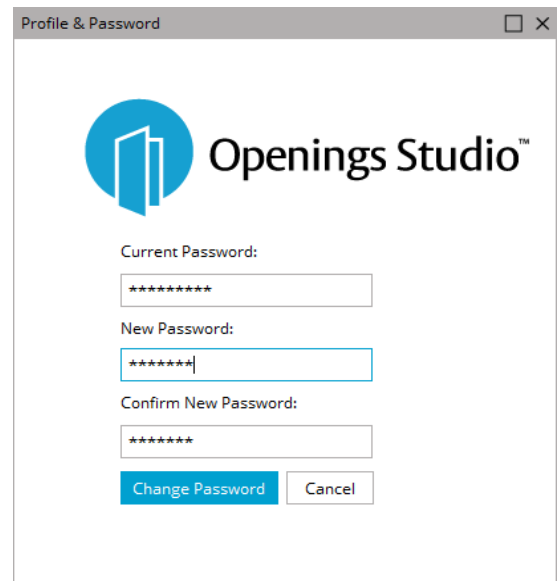
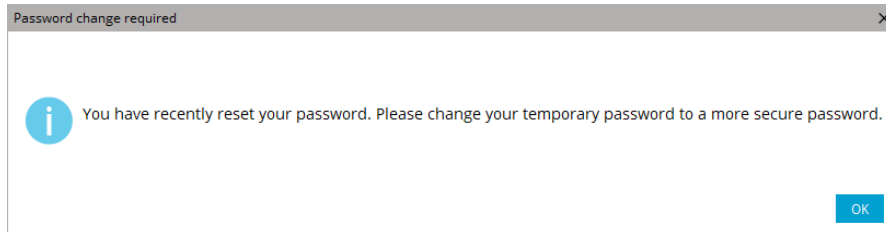


Hello Erin,

Please [click here](#) to reset your Openings Studio password.

If you did not request this, please [Contact Support](#)

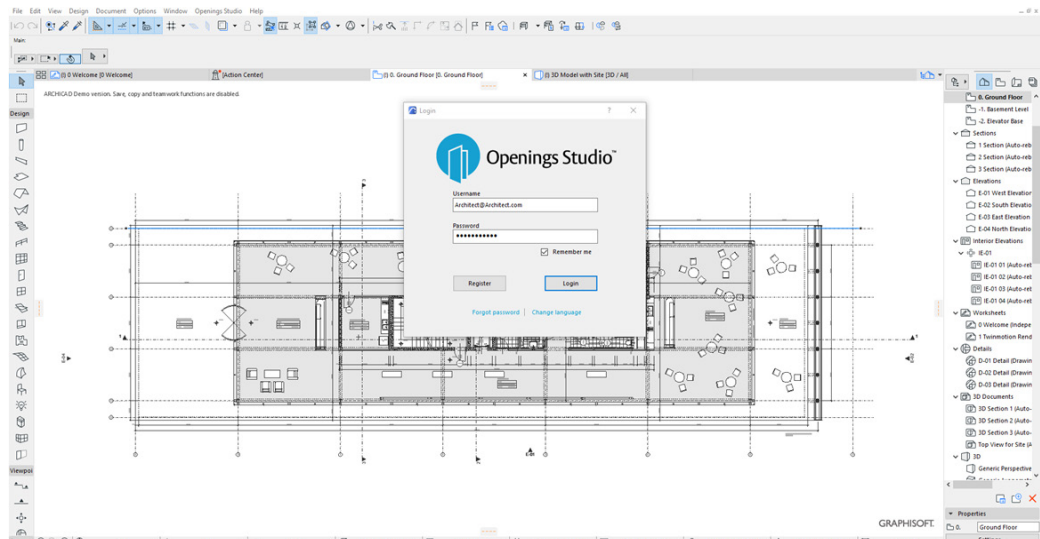
Do not reply to this automatically generated email.
Need assistance? [Contact Support](#).



GRAPHISOFT® Archicad® 25 Plugin

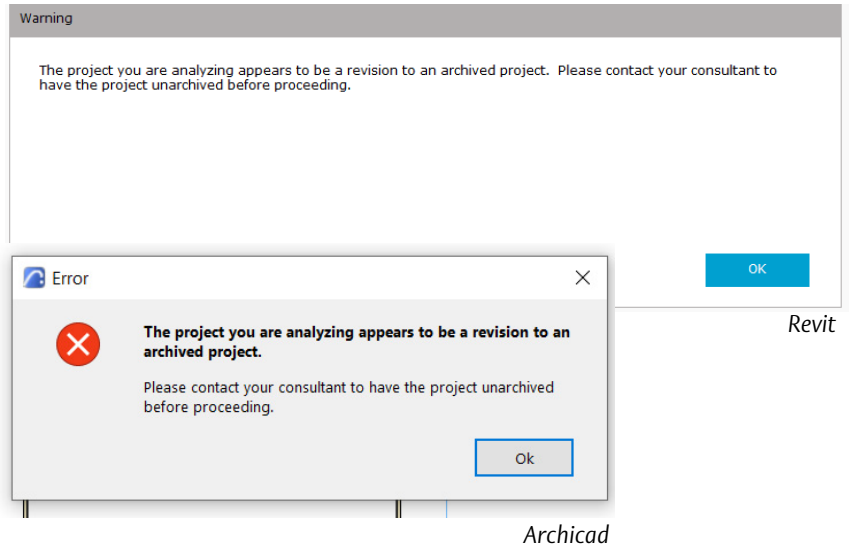
A new plugin for Archicad 25 is now available! Mac users will need to visit the [Knowledge Base](#) to download the plugin. Windows users can download it from the [Knowledge Base](#) or the hamburger menu in Openings Studio.

Fun Fact! *Openings Studio remains the only door and hardware software on the market to support plugins for both Graphisoft® Archicad® and Autodesk® Revit®!*



Analyzing archived projects

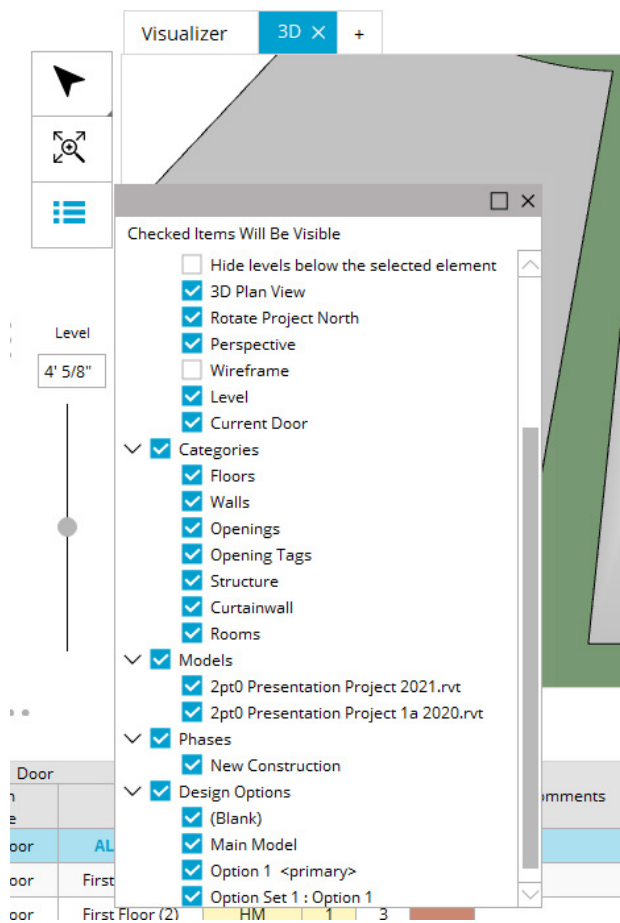
Archiving projects is a nice way to clean up your project list. However, sometimes an old 3D project comes back to life or something is mistakenly archived. When analyzing a project that was archived, architects will now receive a warning that the project needs to be unarchived by an ASSA ABLOY consultant first.



Archicad

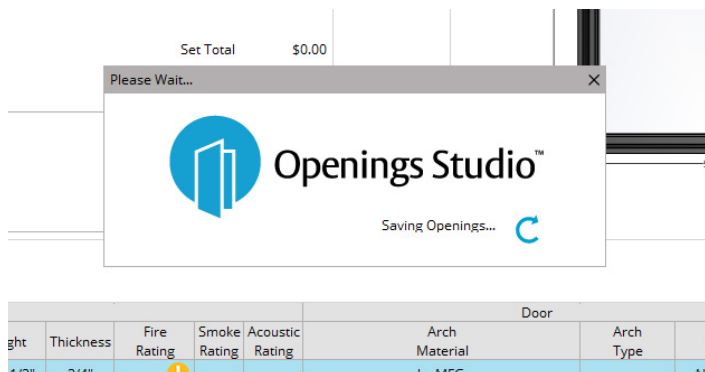
3D building view options

If an architect analyzes a 3D project with multiple phases, linked models, or design options, sometimes these elements overlap each other in the 3D building view and make it difficult to understand the results. Using the new options added, turn elements off and on as-needed to find the best view for review.



Loading screens

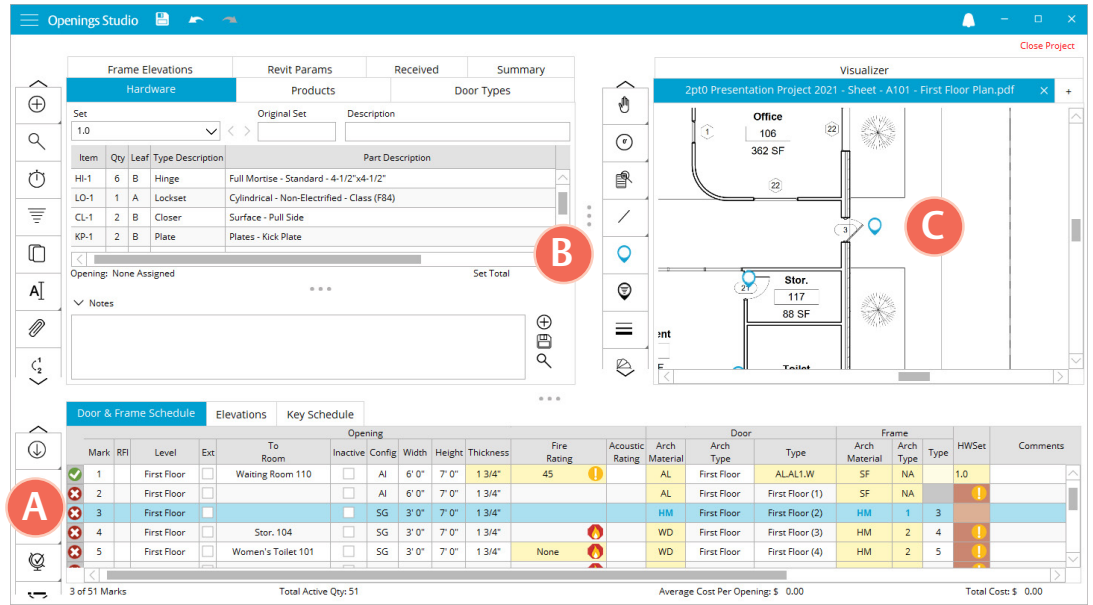
By popular request, pop-up screens that indicate a loading process is happening, such as deleting unused hardware sets or exporting to Revit, will now go behind other programs you bring to the forefront. This will allow you to work in another program outside of Openings Studio, if the process is going to take a few minutes to complete.



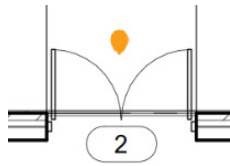
PDF pin and filters

This feature works wonderfully on 2D or 3D projects. If you receive a set of PDF floor plans from the architect, load them into Openings Studio and drop pins where the doors are located. We've made this process easier by placing the pin drop tool on its own button.

Highlight the door you want to pin on the **Door & Frame Schedule (A)**, click the pin button **(B)**, and click on the plan where you want to drop the pin **(C)**. The opening from the Door & Frame Schedule will now jump to that location on the PDF whenever it is clicked.

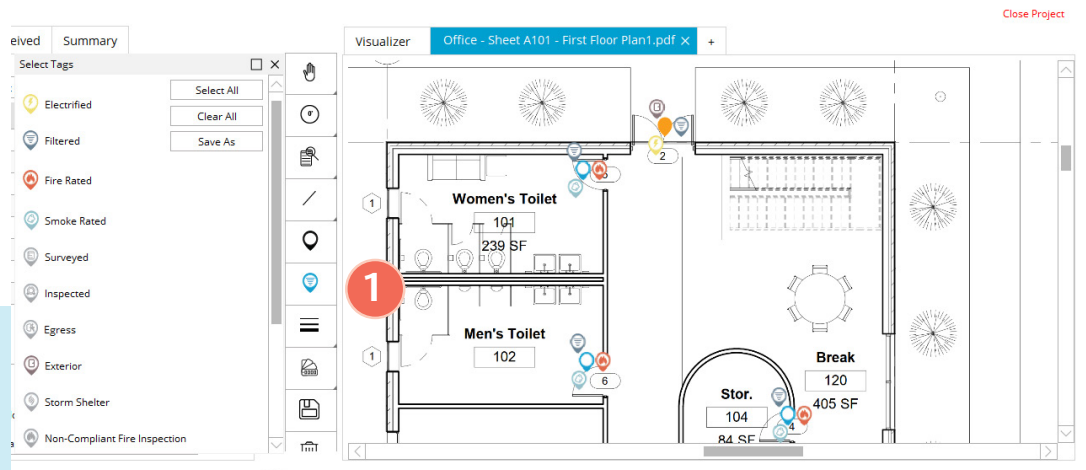


We've also updated the color and look of the active pin so it's easier to see.



In addition this, if you want to review where you have fire rated doors, or one of the other filters available, use the pin filter button **(1)** right below the drop pin button. This will change the icons on the PDF to show you exactly where you have fire rated doors, exterior doors, smoke doors, and more.

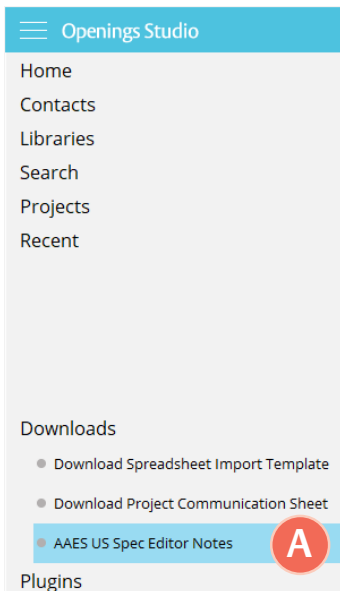
Note: The filters for Egress and below are based off information entered into the mobile app.



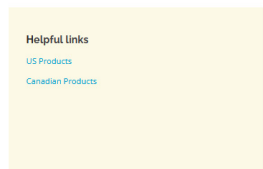
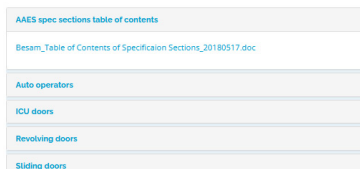
Entrance Systems specification editor notes

If you are a specification writer for Entrance Systems in the United States and Canada, a new Knowledge Base link has been added in the hamburger menu under the Downloads section **(A)** to assist with specification editing.

This link is only available to Entrance Systems users.



Specifications with Editor Notes for the United States and Canada

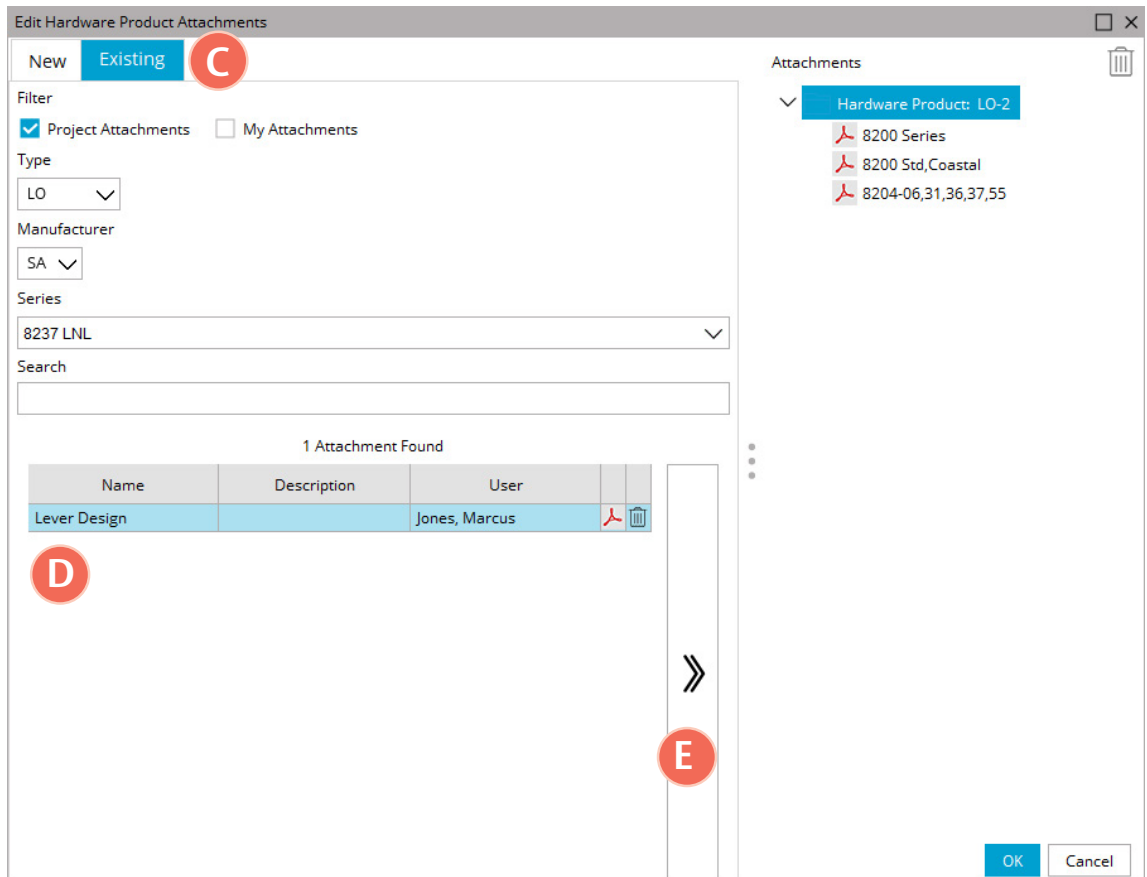
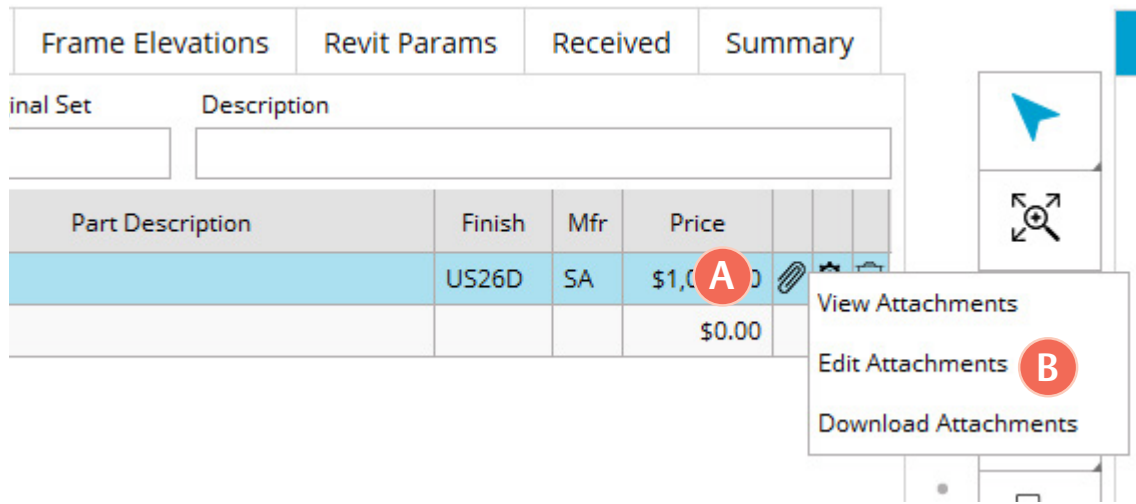


Editing product attachments

When you need to upload the catalog pages for a product, don't forget that you can re-use attachments you've previously added to products by accessing the Existing tab on the Edit Attachments screen.

We've updated the screen in this release to make re-using information easier. Just click on the attachments icon (A). Then select **Edit Attachments** (B). If you are looking for something you've previously added, click on **Existing** (C) to display any attachments previously uploaded for this specific product (D). Highlight the attachment you want and then click the big arrow to add it (E).

If no results are found, try changing the checkboxes and the selections.



How to use the checkboxes at the top of the Existing tab

Project Attachments

Documents all users have uploaded to the project/library.

My Attachments

Documents you have uploaded to any project/library.

Project Attachments and My Attachments

Documents only you have uploaded to the project/library.

How to use the other fields on the Existing tab

Type

Change the drop down to pick a new product type, or clear it with your backspace key to widen your results.

Manufacturer

Works the same as Type.

Series

Informational only, does not change the search results.

Search

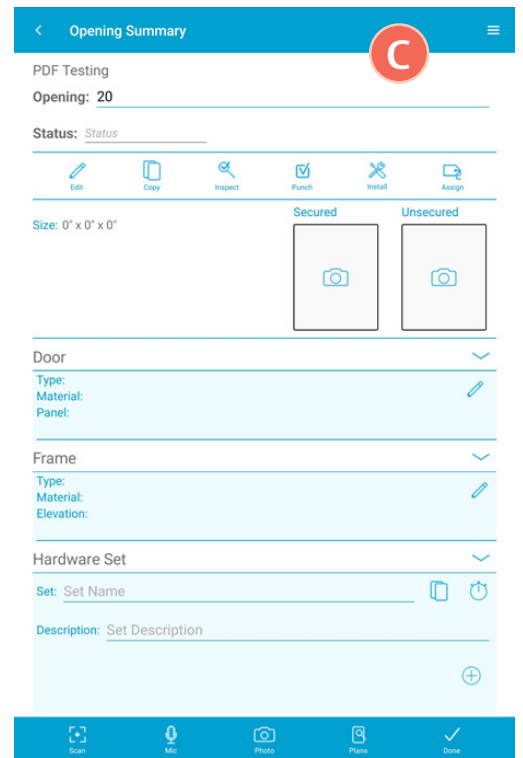
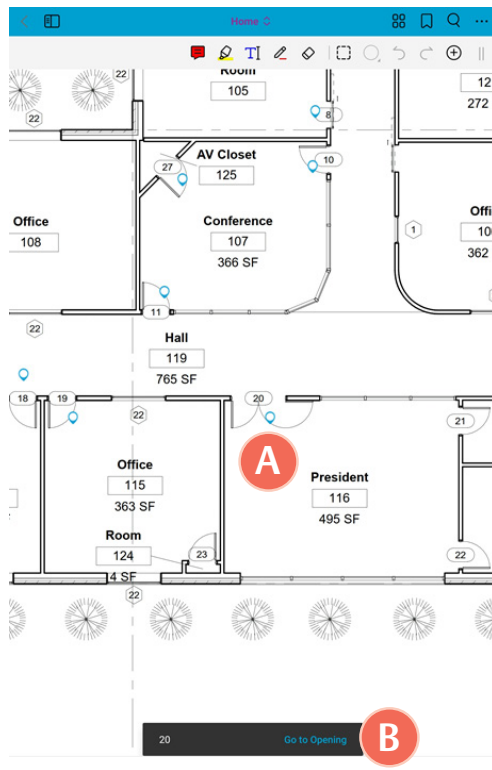
Use this to narrow down the attachments found underneath.

Mobile app updates

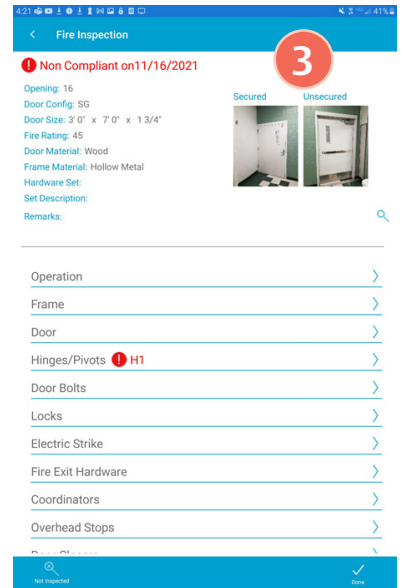
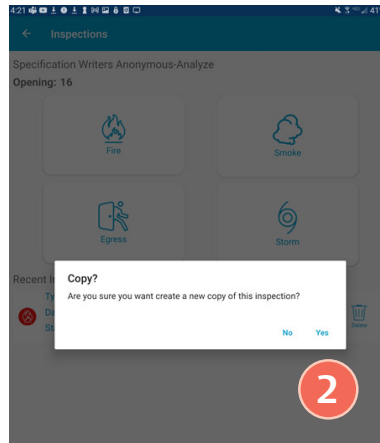
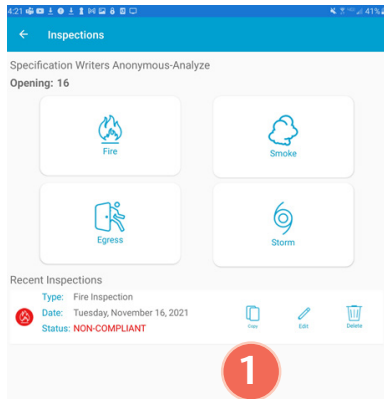
This release includes a number of mobile app updates to speed up activities on site.

You can now access the PDF pin points you assigned in the Openings Studio desktop in the Android version of the mobile app. Tap on a pin (A). Tap **Go to Opening** (B) to jump directly to the door (C).

The iOS version of this feature is targeted for the next release.

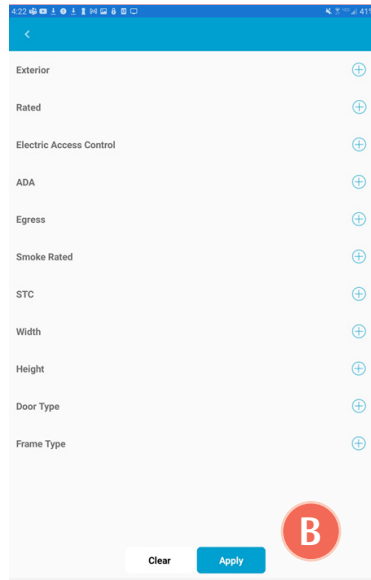
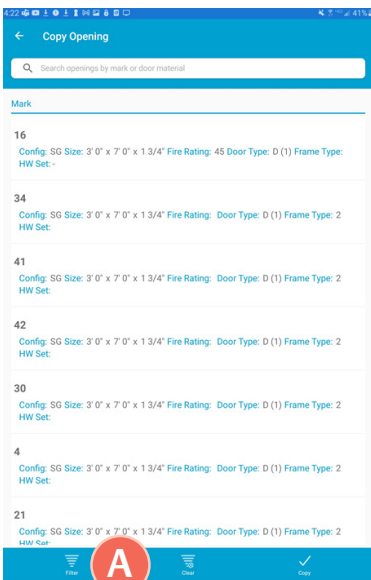


Completing an inspection for year two, three and beyond is faster now with the ability to copy the inspection data from the previous year. If the issues from a previous year still exist, simply tap **Copy** (1) on the last inspection. Tap **Yes** (2) to confirm making a copy. Review (3), and move to the next opening.



A whole hallway of office doors can now be documented in a flash. New copy filters have been added to the copy opening screen to speed up documenting similar doors.

After going into copy mode, tap on **Filter** (A), select filters, and tap **Apply** (B).

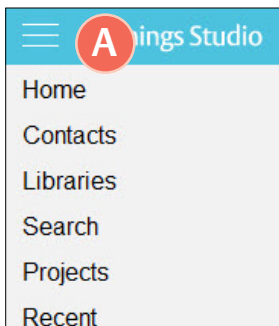
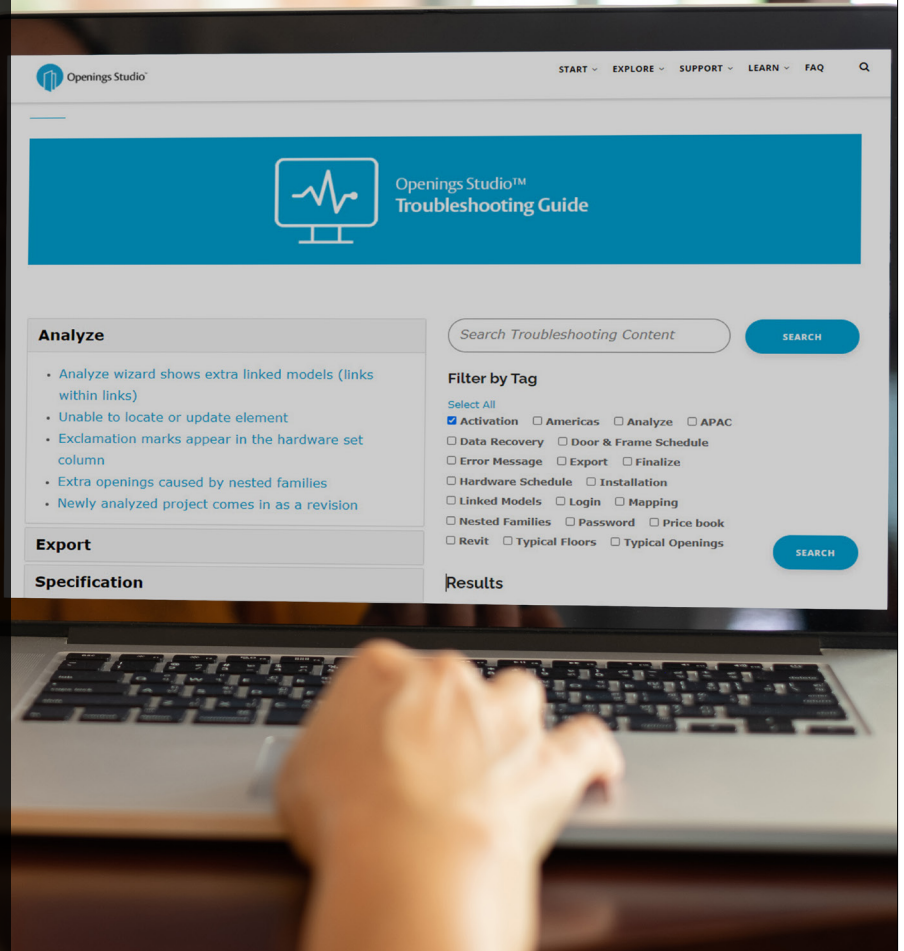


Find troubleshooting answers easily with new search bar, tags

Access Troubleshooting content by going to Openings Studio™ and clicking Knowledge Base in the Hamburger menu.

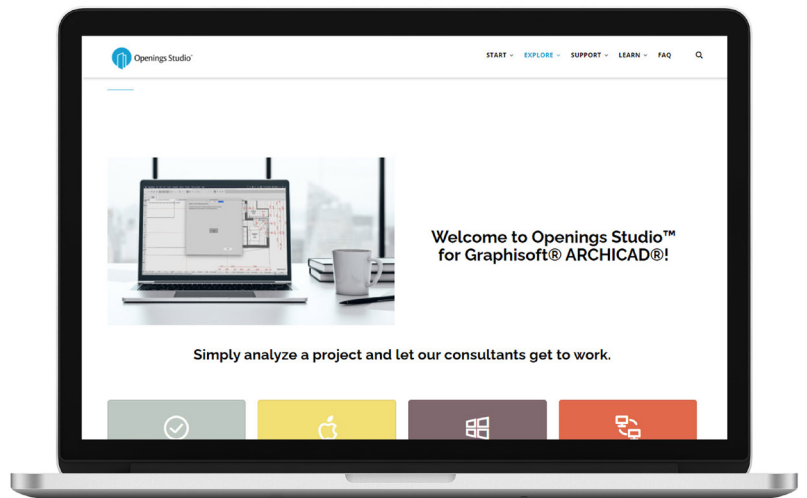
Discover new content, such as Openings Studio™ was not shut down correctly last time it closed or what to do when an outdated price book error appears.

Search by keyword in the troubleshooting search bar, filter by tag, or use the accordion tabs to find the troubleshooting content you need.



Click on the Hamburger Menu (A) at the top of Openings Studio™.

Click on Knowledge Base (B).



Access current information on the Knowledge Base

Walk architects and BIM Managers through the [analyze](#) or [export](#) process with just a couple of clicks, or find new information about installing [Archicad®](#) add-ons. Visit <https://knowledge.openingsstudio.com> to find the latest.

Stay current with the latest features

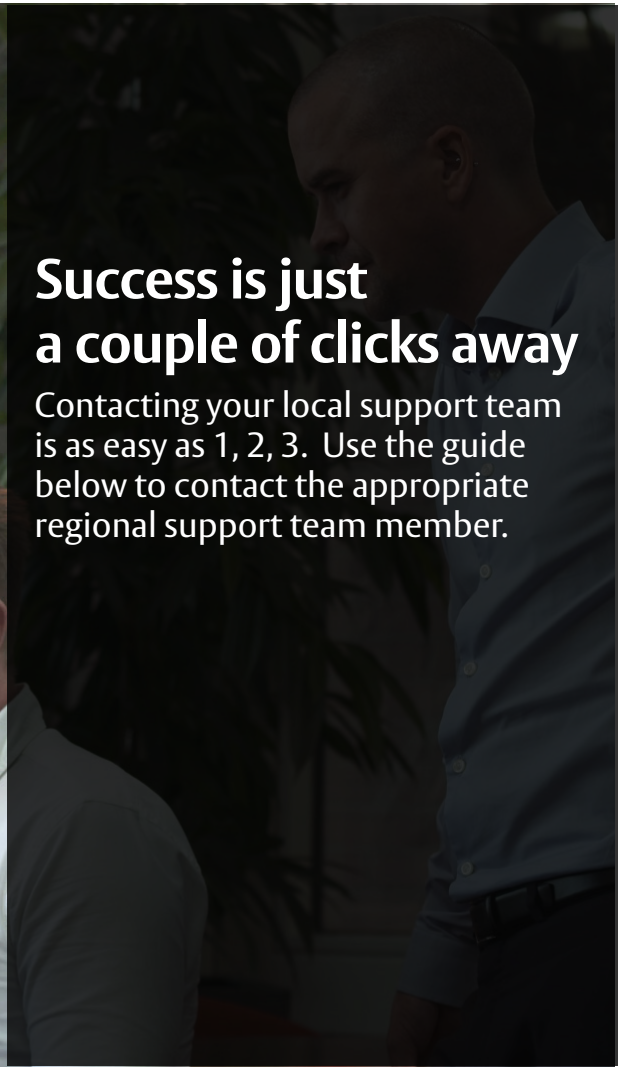
The current Release Notes are always available in the Knowledge Base on the Specifier and Consultant home pages. For past release notes, visit the Release Archive. Click on Openings Studio™ Release Archive at the bottom of the current Release Notes.

Have questions related to the Knowledge Base?
Email knowledge@openingsstudio.com.



Success is just a couple of clicks away

Contacting your local support team is as easy as 1, 2, 3. Use the guide below to contact the appropriate regional support team member.



- Home
- Contacts
- Libraries
- Search
- Projects
- Recent

- Downloads
- Plugins
- Knowledge Base
- Contact Support**
- Settings
- Exit

A Click on the Hamburger Menu at the top of Openings Studio (A).

B Under Knowledge Base, click on Contact Support (B).

| | | |
|---|--------|--|
| Send | To... | |
| | Cc... | |
| | Bcc... | |
| Subject: Report a problem in Openings Studio | | |
| Please include the following information | | |
| <ol style="list-style-type: none"> 1. Project ID 2. Language 3. Description including the steps to reproduce the issue 4. User who experienced the issue 5. Revit or ARCHICAD? Which version? 6. Attachments or images? | | |

C An email will pop-up from your email client, pre-addressed to the appropriate support team. The e-mail will include helpful questions. Add your details and hit send (C).

ASSA ABLOY

Hi,
Incident [INC0705822](#) has been created for you!

Opened: 2019-09-25 16:28:39 GMT | **Opened by:** Melissa Megna

Short description: Contact Support

Description: Type in request and send.

D Once submitted, you will receive a verification email that a service ticket was created (D).

- LEARN ▾ FAQ Q

[Interactive Video Training](#)

[Troubleshooting Guide](#)

[Doorway to BIM Blog](#)

[Testimonials](#)

[ServiceNow User Guide](#)

Need more help?

The ServiceNow User Guide is available to ticket fulfillers from the drop-down in the main navigation.

Take marketing to the next level

Looking for Openings Studio marketing or communication material? We have several resources available to kick start your marketing campaigns or training efforts.



Your search is over

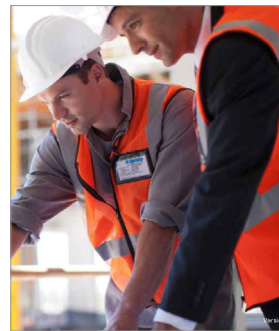
If you've been on the hunt for whitepapers, solution sheets, brochures, videos or other marketing items, [you can easily find these materials on Avenue.](#)

Go to *Library* and select *Market & Sales* (A). Then select *Marketing* (B). From there, you'll find an abundance of resources including the following:

- [Access the BIM & Openings Studio Playbook](#)
- [Review Event & Tradeshow assets](#)
- [Hear from users like you](#)
- [Discover global case studies](#)
- [Listen to Doorway to BIM](#)
- [Watch the Openings Studio playlist](#)
- [Read news & press releases](#)
- [Learn Openings Studio branding protocols](#)
- [Download Release Notes](#)

Have questions related to marketing?
Email marketing@openingsstudio.com.

| | |
|-----------------------|---|
| Market and sales | A |
| BIM | |
| About BIM | |
| About Openings Studio | |
| Marketing | B |
| Support | |
| Contacts | |



BIM Education Guide

BIM is a complex topic, but with our self-paced Education Guide, you can quickly get caught up to speed and find great resources across the Group. [Download it on Avenue.](#)



Architect Bundle

Download targeted marketing resources for architects and BIM managers [on Avenue.](#)



Owner Bundle

Download targeted marketing resources for owners, facility managers and architects [on Avenue.](#)

The ASSA ABLOY group is the global leader in access solutions. Every day we help people feel safe, secure and experience a more open world.

ASSA ABLOY

For more information, visit www.openingsstudio.com

Copyright © ASSA ABLOY. All rights reserved. Reproduction in whole or in part without the express written permission of ASSA ABLOY is prohibited.