



Envision the future. Transform the way you work.

That's our mission and goal at ASSA ABLOY. The Openings Studio team continuously develops new features and envisions game-changing solutions that will transform the way you work, now and in the future. Our job is to make yours easier.

That's why it brings me such pleasure to bring you the latest features and enhancements with the latest release. When you launch Openings Studio after Oct. 5th, you will notice performance enhancements when working within the Building View and floor plan views. In both the building view and Visualizer we now have unicode character support for languages containing accents and other non-ASCII supported characters.

As with any software solution, usability and accessibility is a core aspect of our ongoing innovation. Sometimes those changes are significant, such as with our 3.0 release in 2018. Sometimes, those changes include features such as the latest feature - Openings Studio Dark theme. Dark themes are important to people who work at night or in low-light conditions, or whom may have vision or accessibility issues. It is with that in mind that we give you the option to choose the best experience for your environment.

We are also excited to announce the implementation of our Global Openings Studio Support solution. This will go-live on October 18th and you can learn more about it at the end of this document.

If you have questions or are looking for a how-to guide, don't forget to visit the Openings Studio Knowledge Base. For a demonstration of the latest changes, please contact your Openings Studio consultant today.

We hope you enjoy!

Cheers,

Paul Candy

Global Director of BIM Technologies

Contents

- 02 | Introducing the Openings Studio Dark Theme
- 03 | New Plan View tags and filtering options
- 03 | Character sets respected in Visualizer and Building Views
- 04 | Add non-sequential assorted openings
- 04 | Swap and replace hardware adjustments
- 05 | Quick keys added to Openings Screen
- 05 | Fully disable the ability to copy products from previous pricebooks
- 06 | Filter function in Custom Product Search
- 06 | Refinalize to SpecTRAK with minor project details changes
- 07 | Compare original and edited product descriptions
- 08 | Browser should remember last file location
- 08 | Help links in Openings Studio direct users to the Knowledge Base
- 09 | Set Families as Metric upon Export
- 09 | Dock/Undock Product Search tab
- 10 | Plugin updates required
- 10 | Uploaded file names shown in Analyze Email
- 11 | Adjusting prices at product and product line levels
- 12 | Comprehensive, around the world support for all things Openings Studio

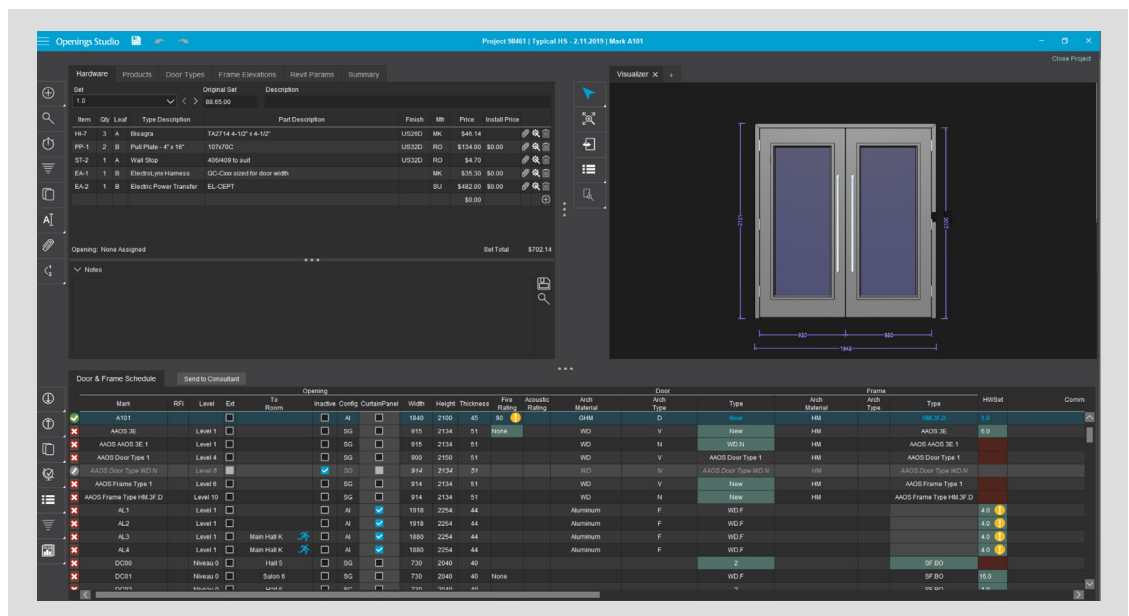
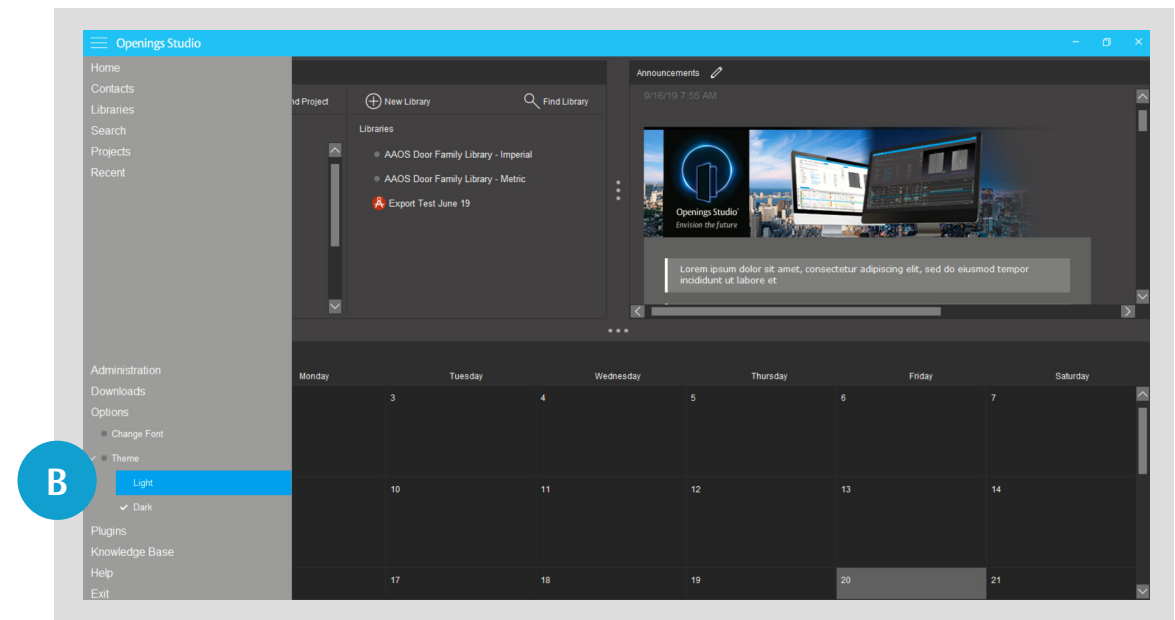
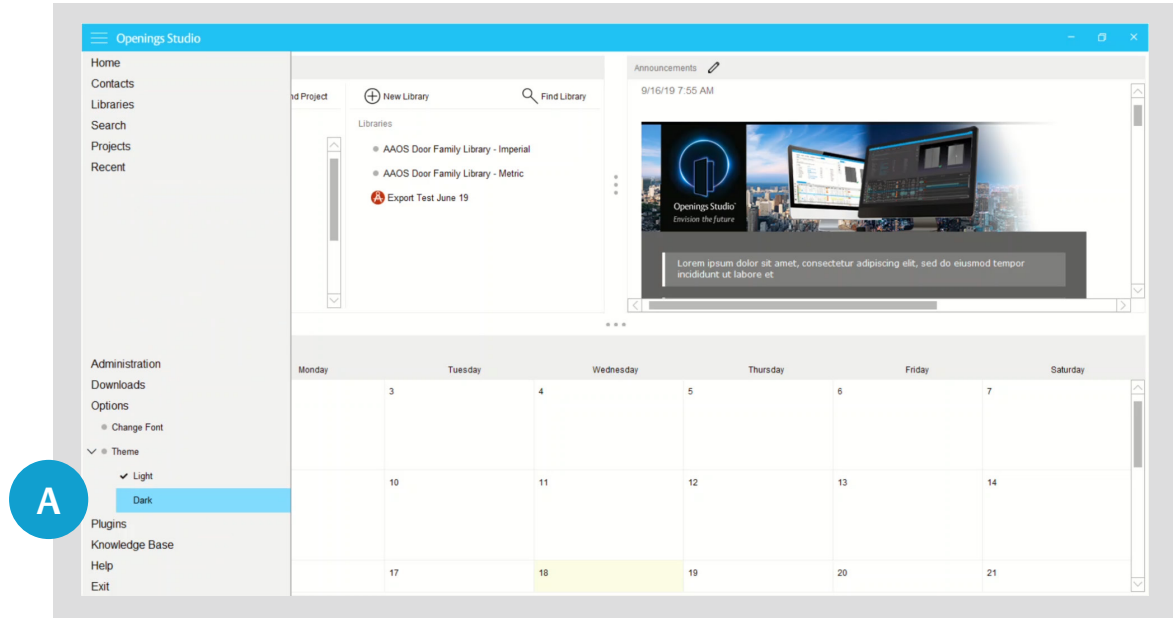
Introducing the Openings Studio Dark Theme

Tired of turning down the brightness on your screen? We've got you covered. The Dark theme is an enhancement to the overall look and feel, and intended to aid those who work at night, have low-light conditions or who might be dealing with accessibility issues. To turn off the lights, go to the **Hamburger menu > Options > Theme > Dark (A)**.

To see the newly saved theme setting, logout and restart Openings Studio.

Want to go bright again? Go back through the same steps, but select the 'Light' theme option. **Hamburger menu > Options > Theme > Light (B)**.

NOTE: Settings are saved locally. The theme will need to be updated on each device individually.

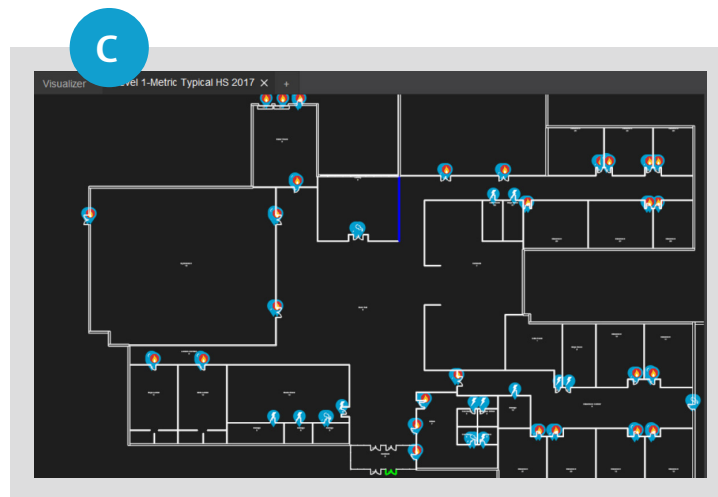
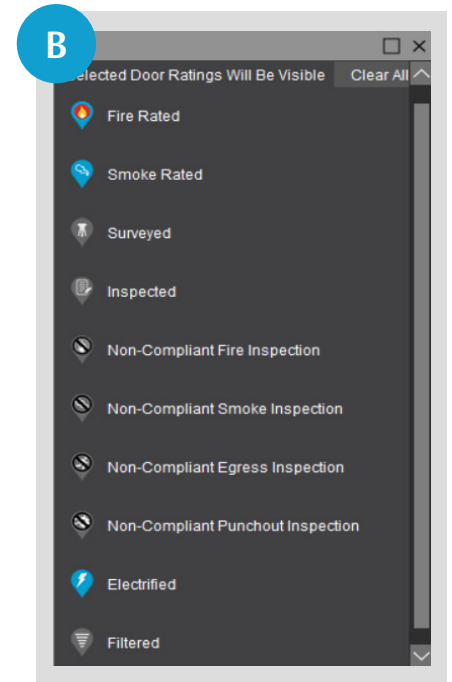
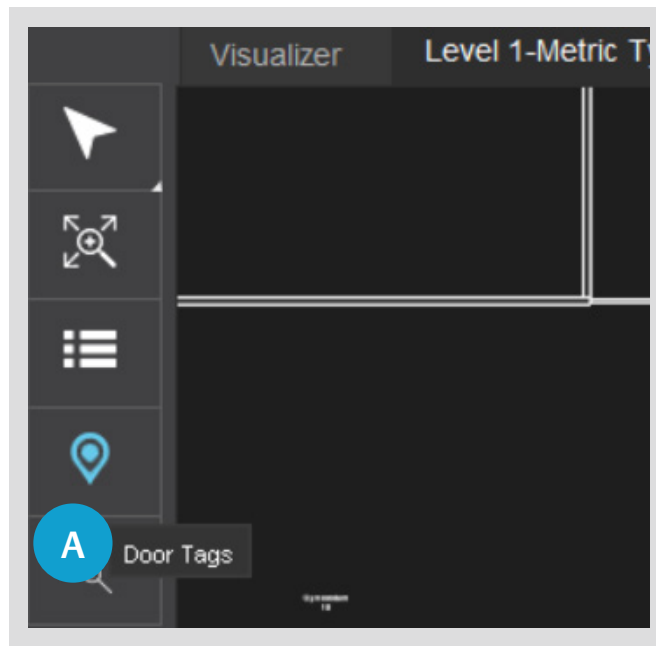


New Plan View tags and filtering options

Plan View door tags are an exciting new feature which allows you to filter openings by activated tags in the Plan View.

Now you can easily see where Fire Rated, Smoke Rated or Electrified openings are situated within the building.

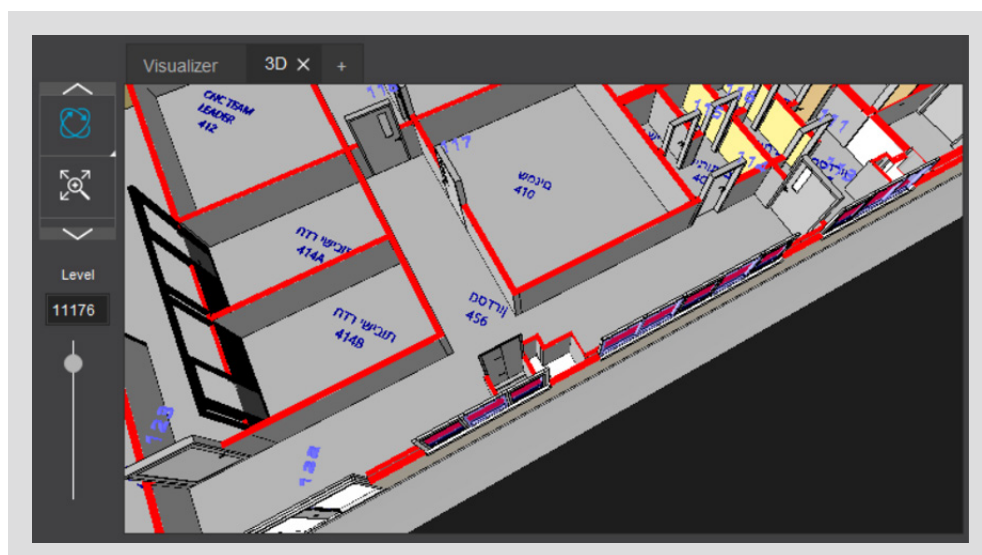
To filter doors by tags, go to the Plan View toolbar and select the Door Tags Icon (A). A pop-up (B) will appear showing all of the filter options available. Select the filter to use (C). The Plan View will show the openings with this tag. Additionally, you can select the Filtered icon and see any opening that has been filtered within the Door & Frame Schedule. This will allow you to quickly see the location of each opening.



Character sets respected in Visualizer and Building Views

In both the building view and Visualizer we now have unicode character support for languages containing accents and other non-ASCII supported characters.

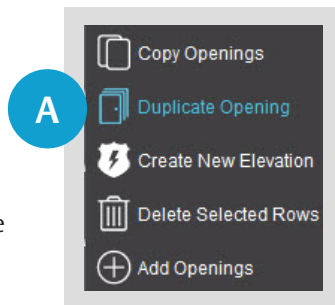
The Door Mark and Room Name will also display the information and will wrap it for easier readability.



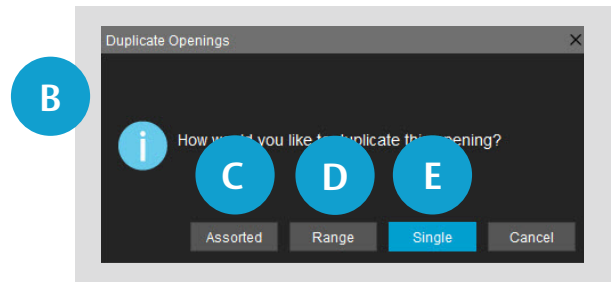
Add non-sequential assorted openings

Even more functionality has been added to the Duplicate Opening Button, which is accessible only on 2D projects. The last release included the ability to make a single copy or multiple copies of an opening. In this release, the process has been further refined so that openings can be entered in a comma separated list.

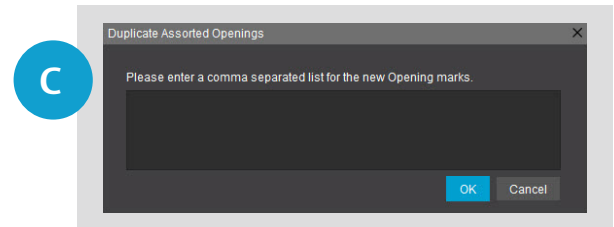
1. Select the Duplicate Opening icon from the Door & Frame Schedule menu (A).



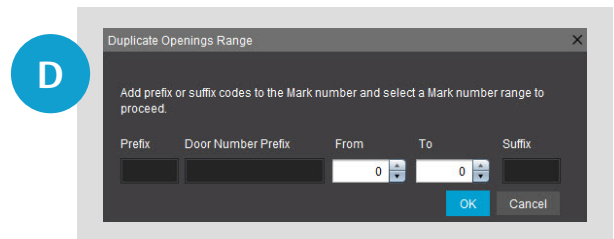
2. Choose how you would like to duplicate the opening (B).



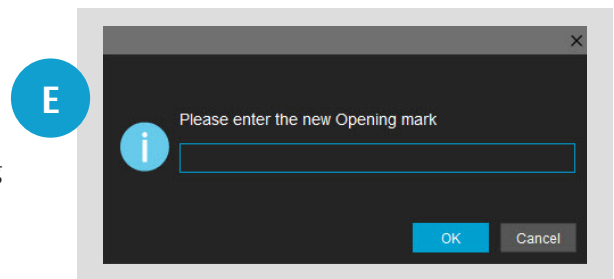
Assorted - Allows you to enter new Opening marks using a comma separated list (C), for example (101, 106, 108, 130).



Range - Allows you to add a range of openings (D), for example (100 - 150).



Single - Allows you to create a single copy of the opening (E), for example (100).



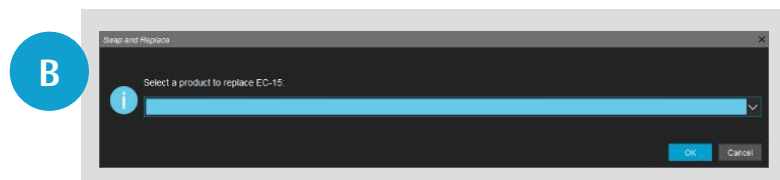
Swap and replace hardware adjustments

The Swap & Replace screen will no longer auto-select the first product in the drop-down option. The user will need to decide and select which product they would like to swap/replace.

1. Select the Swap & Replace icon from the Hardware toolbar (A).



2. The Swap & Replace pop-up will appear (B).

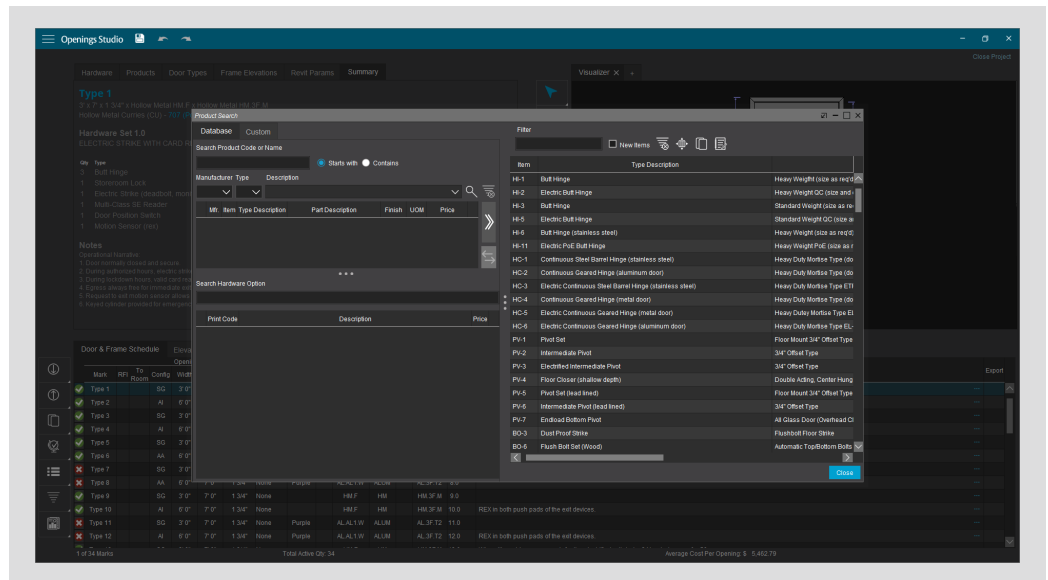


3. Begin typing or use the drop-down to choose the replacement product (C, D).



Quick keys added to Openings Screen

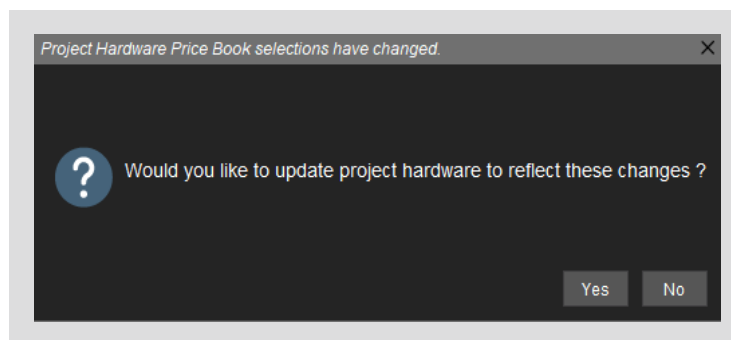
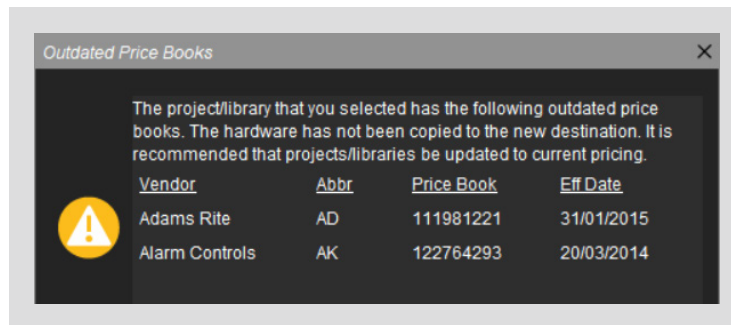
Finding products is easier than ever with new quick keys. In the Openings Screen, simply use CTRL+F to open up the Product Search screen, or use CTRL+S to save changes.



Fully disable the ability to copy products from previous pricebooks

It is no longer possible to bring in products from a previous price book when copying hardware from an existing project or library.

Changing pricebooks in the project will prompt the upgrade of the items to the latest pricebook.

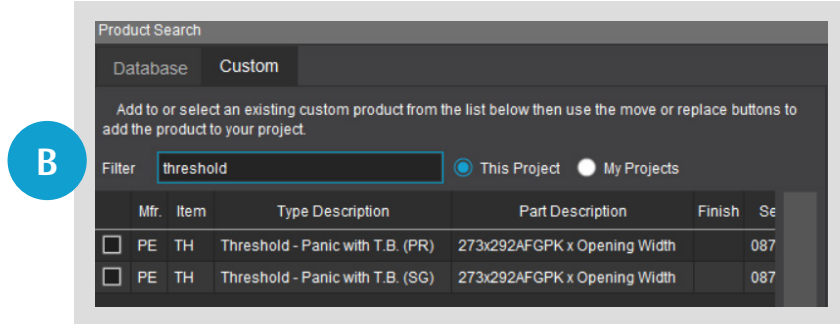
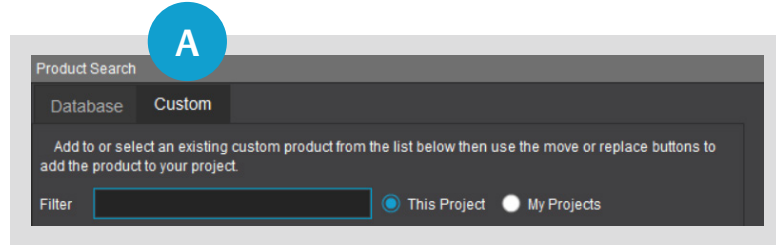


Filter function in Custom Product Search

Database Product Search filter functionality is now available for Custom products.

1. From the Product Search Screen click on the Custom tab (A).

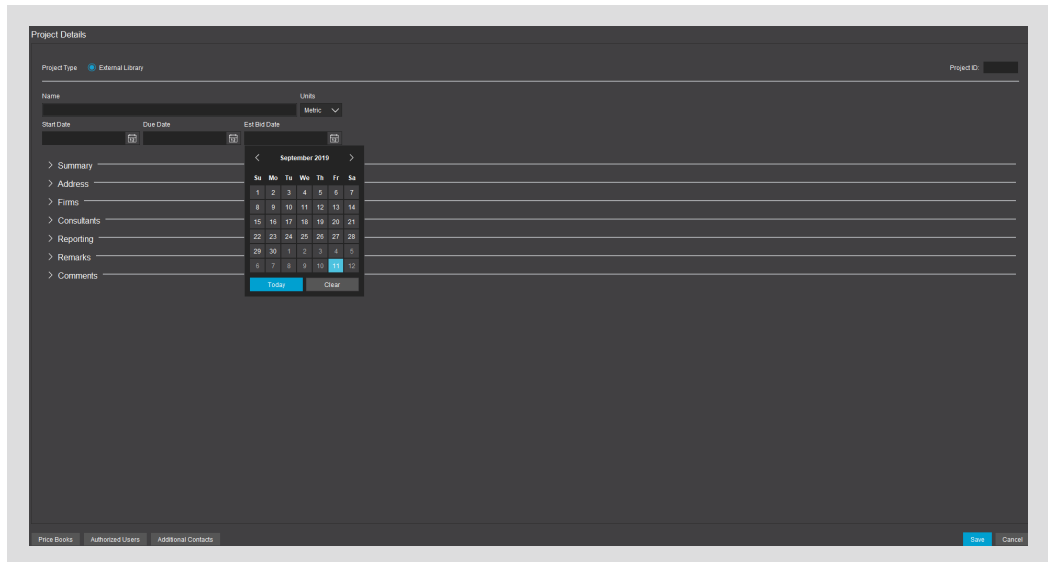
2. Use the filter field to search within the current project or in all your projects (B).



Refinalize to SpecTRAK with minor project details changes

If small changes or modifications have been made to a project, (e.g. change to the estimated bid date) you are now able to refinalize just the Project Details screen with those minor changes in place without having to check the Openings screen for incomplete lines. When changes are made to the Details screen, you will be prompted to re-finalize if needed.

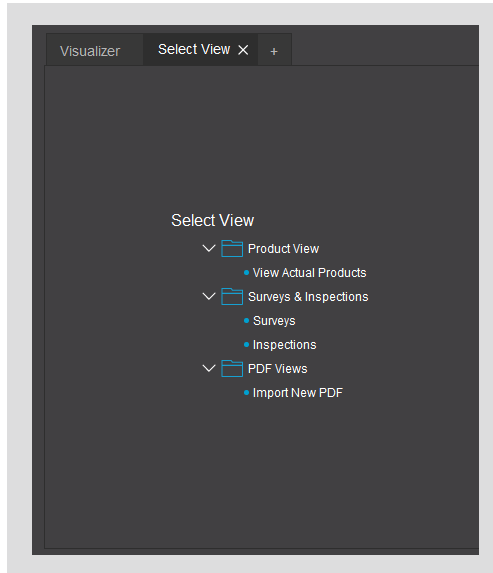
Note: Only the project Details will be sent to SpecTRAK when a project is finalized from the Details screen.



Compare original and edited product descriptions

If you've modified a product after adding it to your project, such as removing hinge sizes or changing the Type Description text, you are now able to open a tab that will display the original product used in its unmodified form. This window can be opened next to the hardware set for comparison.

NOTE: Outdated products that are no longer available will appear in red text.



The image shows a 'Hardware' tab with a 'Products' sub-tab selected. Below the tabs are icons for a list, refresh, and save. A table displays the following data:

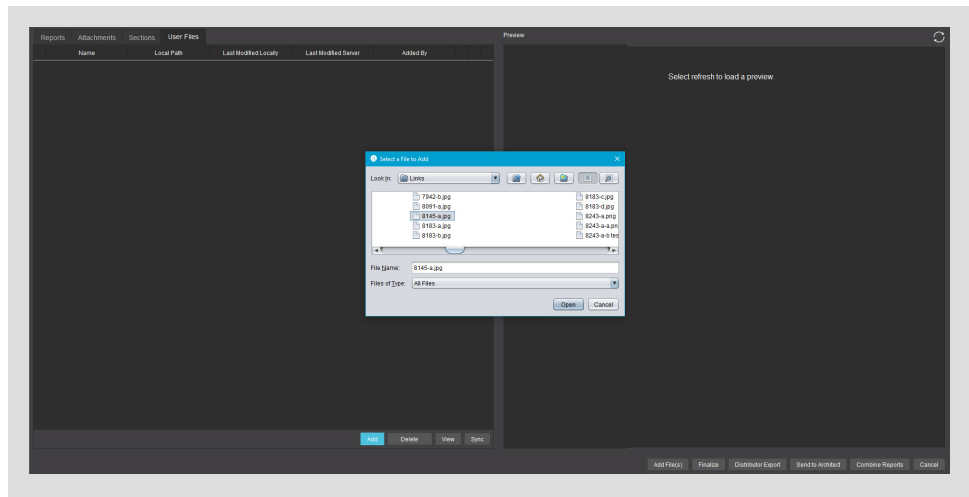
Item	Type Description	Part Description	Finish	Mfr	Section	Price	
HI-2	Hinge	TA2714	US26D	MK	087100,087400	\$15.38	EA
HI-3	Hinge	TA2714 NRP	US26D	MK	087100,087400	\$20.53	EA
HI-4	Hinge (heavy weight)	T4A3786 NRP	US26D	MK	087100,087400,	\$40.59	EA
HI-5	Hinge	MP79	US26D	MK	087100,087400	\$4.44	EA
HI-6	Hinge (heavy weight)	T4A3786	US26D	MK	087100,087400	\$35.03	EA

The image shows a 'Visualizer' window with a 'View Actual Products' dialog box open. The dialog has a title bar with 'View Actual Products', a close button (X), and a plus sign (+). The main area is titled 'Product List' and contains a table with the following data:

Item	Type Description	Part Description	Finish	Power	Manufacturer
HI-2	Hinge	TA2714 4-1/2" x 4-1/2"	US26D		MK
HI-3	Hinge	TA2714xNRP 4-1/2" x 4-1/2"	US26D		MK
HI-4	Hinge	T4A3786 4-1/2" x 4-1/2"	US26D		MK
HI-5	Hinge	MP79 4-1/2" x 4-1/2"	US26D		MK
HI-6	Hinge	T4A3786 4-1/2" x 4-1/2"	US26D		MK

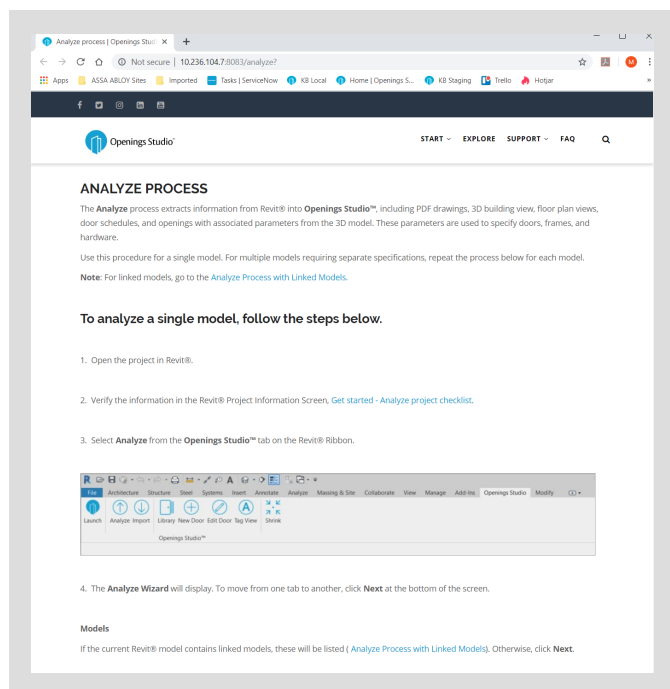
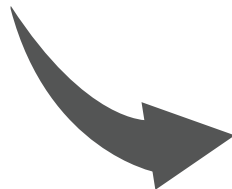
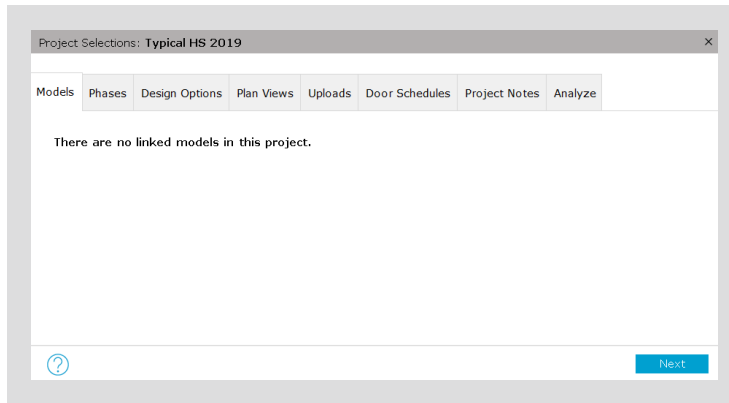
Browser will remember last selected file location

To simplify the number of clicks it takes when adding images or information to the Reports screen, files added to User Files will now be accessible from the last upload location. Simply add a file and when adding additional files, the file browser will take you to the last spot you were.



Help links in Openings Studio direct users to the Knowledge Base

Help links have been added to the Export and Analyze process to allow users quick access to the information on how to complete the wizards. These can be found by clicking on the (?) icon at the bottom the wizard. New links will be added to Openings Studio, so stay tuned for more!

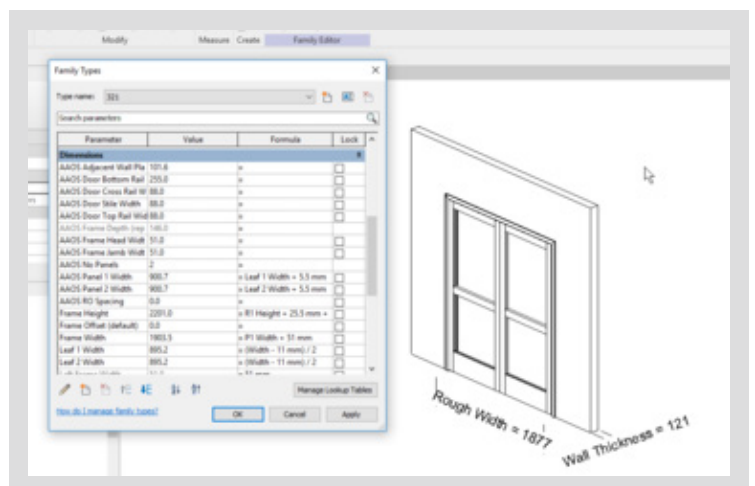
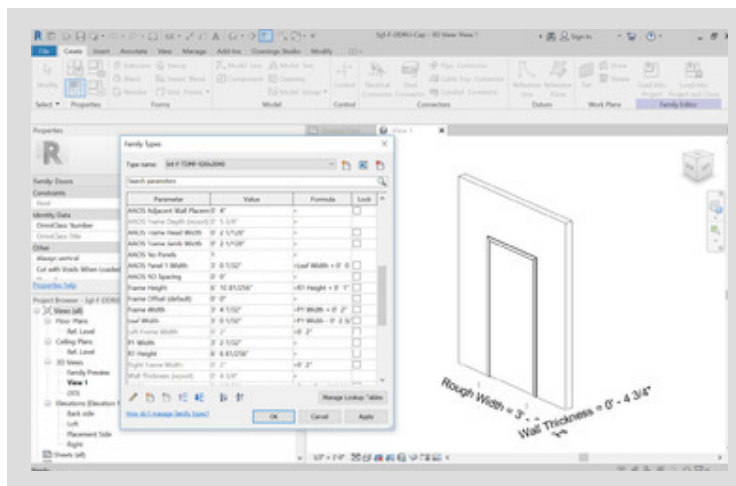


Set Families as Metric upon Export

A change has been made to metric door families within Openings Studio to enable the parameter values to be set and viewed in Metric by default. Now when opening the door family in the Family Editor the parameters will display the correct metrics.

To make changes to existing metric project units or change it back to Imperial:

Go to **Revit > Manage > Project Units > Change to Metric/Imperial**



Dock/Undock Product Search tab

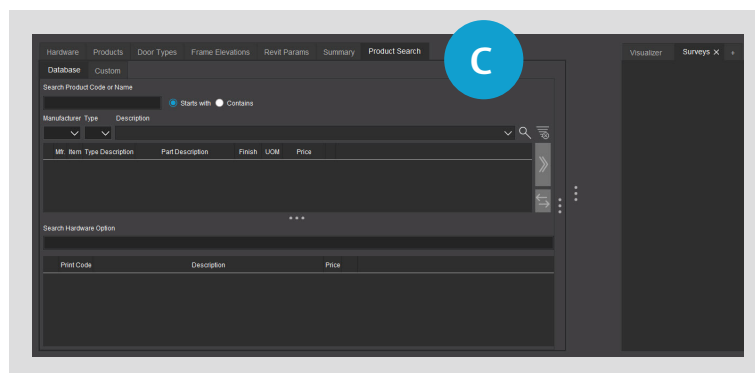
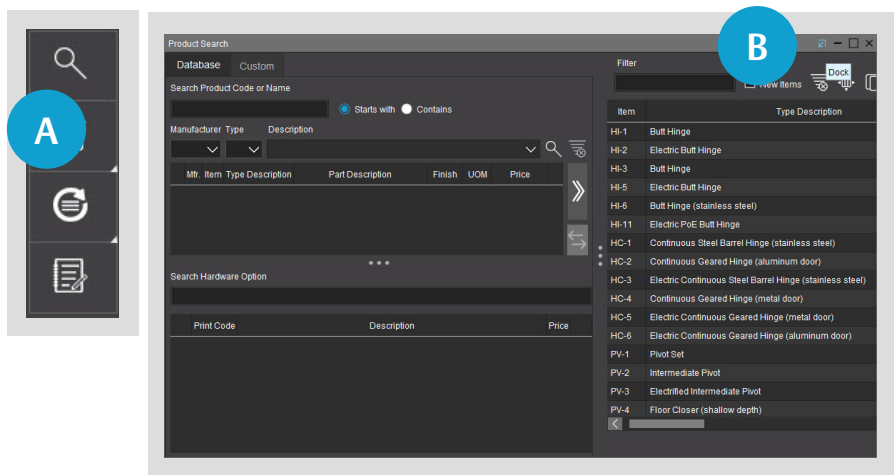
The Product Search screen can now be docked, which will allow it to stay open. To use this feature select the Product Search tool from Tool Bar. (A)

Select the blue dock icon to add Product Search as a tab. (B)

Product Search is now docked. (C)

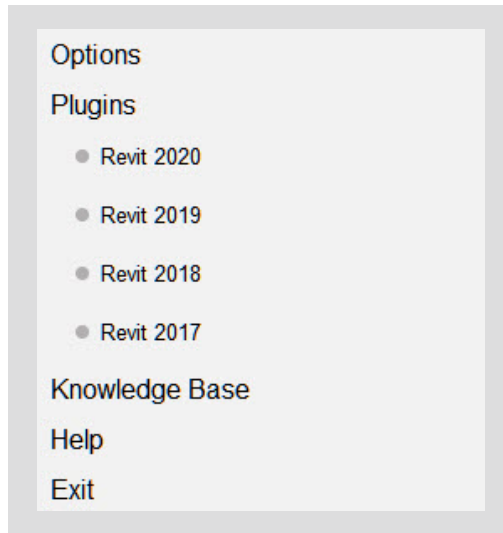
Right-click to undock. (D)

Note: This feature is intended to work in tandem with the mobile app and site surveys to make swapping products documented during that process easier.



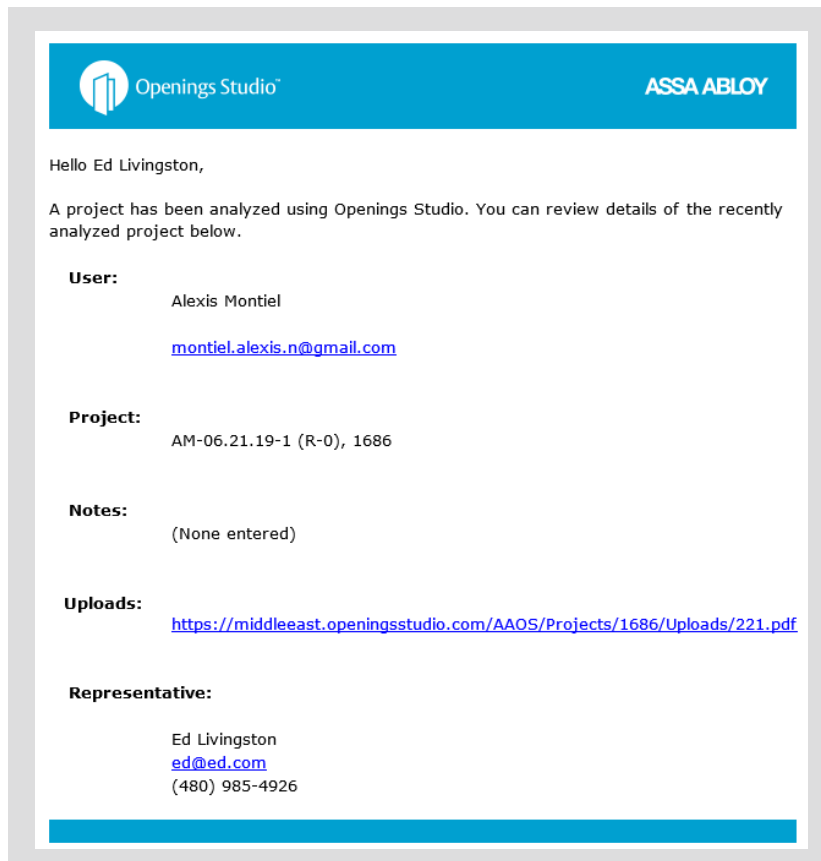
Plugin updates required

Due to ongoing enhancements and security changes within Openings Studio, architects will need to update their plugins to access the latest features. This will be required the next time a user attempts to access Openings Studio from within Revit. To get an updated plugin, go the Hamburger menu and select Plugins. Then select the appropriate Revit version for installation.



Uploaded file names shown in Analyze Email

In projects that have been analyzed, both consultant and architectural users will receive an e-mail with information pertaining to the project, including the uploaded file name. This allows you to quickly see the relevant attachments needed within the project.



Adjusting prices at product and product line levels

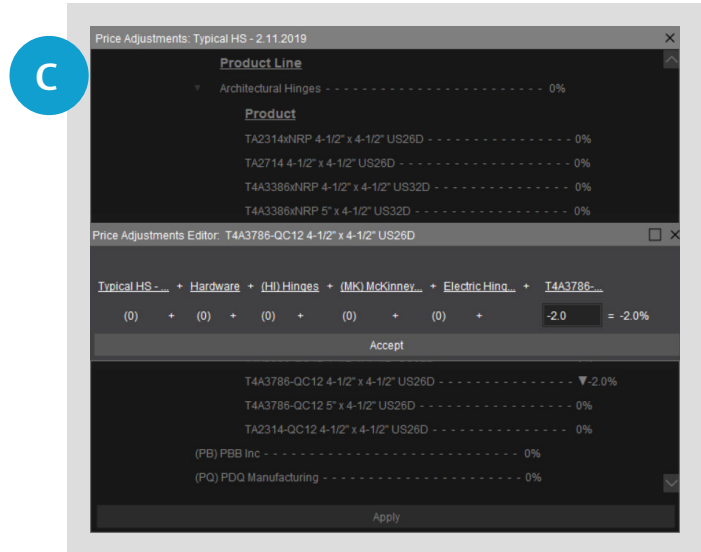
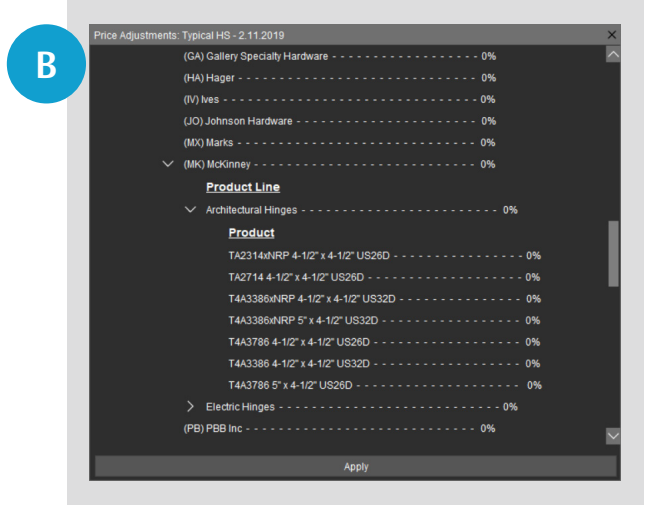
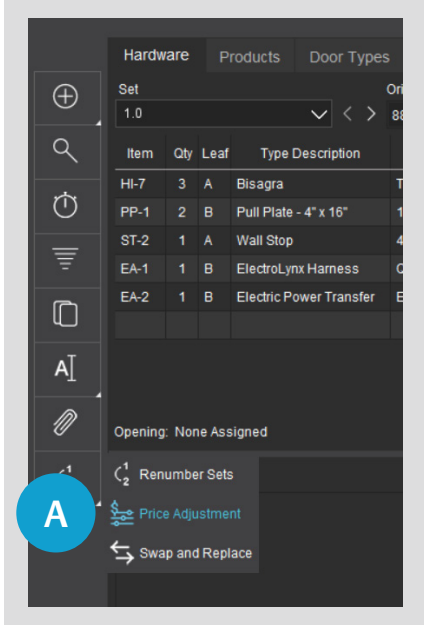
Enhancements have been made to the Price Adjustment Tool. Users can now adjust prices at the Product Line and Product level.

Click on the Price Adjustment icon from the hardware toolbar (A).

Select the drop-down for Hardware. Use the drop-down to select the product line or product (B).

Make the price adjustment and click Accept (C).

Note: This feature may not be turned on for you by default. If you would like access to it, please contact your Openings Studio Consultant for more information.



Comprehensive, around the world support for all things Openings Studio

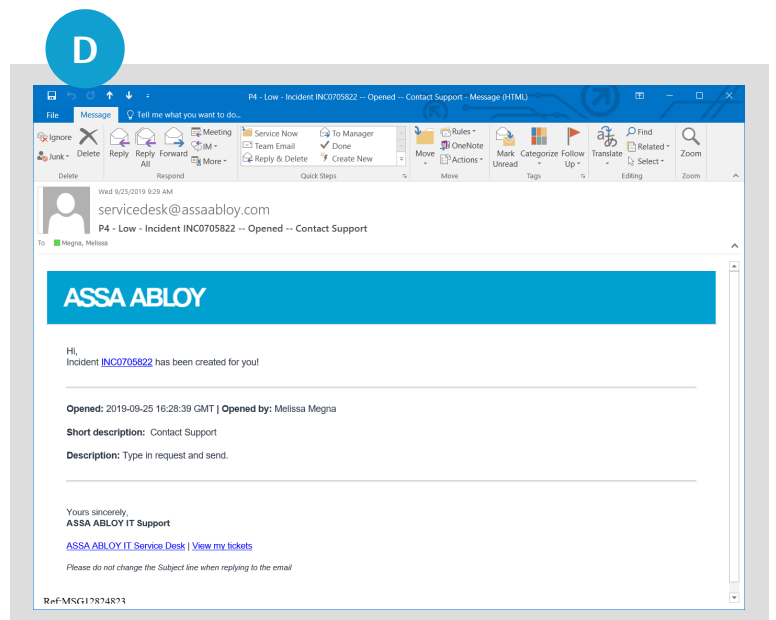
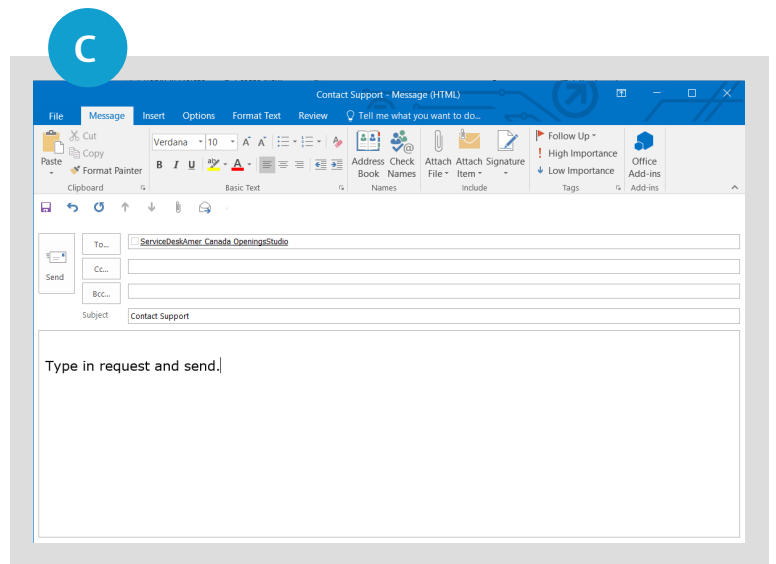
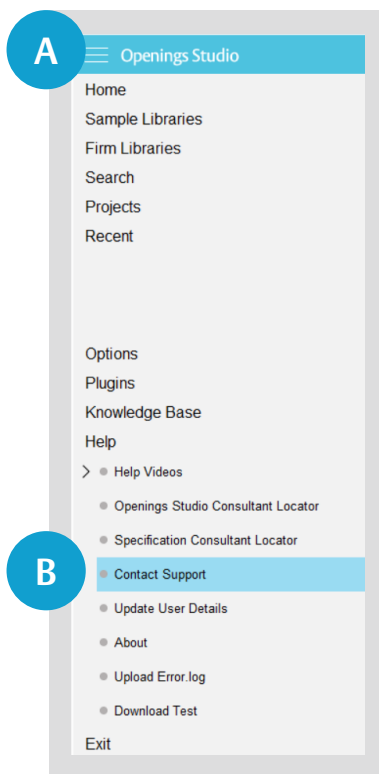
In addition to access to the Openings Studio Knowledge base, personalized, global support is now at your fingertips. We are excited to announce the implementation of our Openings Studio Global Support solution, going live on October 18th. Openings Studio users can submit requests simply by clicking on “Contact Support” under Help from the Openings Studio Hamburger menu. Requests are designated to the appropriate local or regional support team member. For more information, contact Melissa Megna, melissa.megna@assaabloy.com.



Click on the Hamburger Menu at the top of Openings Studio. (A) Under Help, click on Contact Support. (B)

An email will pop-up from your email client, pre-addressed to the appropriate support team. Add your support request and hit send. (C)

You will also receive a verification email that a service ticket was created. (D)



The ASSA ABLOY group is the global leader in access solutions. Every day we help people feel safe, secure and experience a more open world.

ASSA ABLOY

For more information, visit www.openingsstudio.com

Copyright © 2019, ASSA ABLOY. All rights reserved. Reproduction in whole or in part without the express written permission of ASSA ABLOY is prohibited.